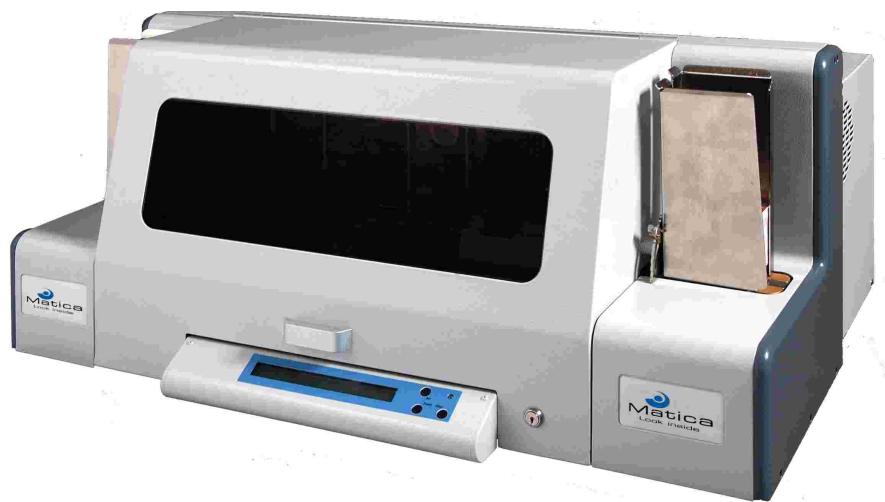


## SMART CARD PERSONALIZER

DESKTOP HIGH-SPEED SMART CARD PERSONALIZATION



# MC10

Looking to upgrade your card issuance system with an expensive smart card module? Then you better read this...

Card issuers are faced with the decision of upgrading their existing card issuance systems with modules that will enable them to cater for the demands derived from the move towards smart card based card programs and applications across industries.

Always looking to make card issuance affordable and cost-efficient, Matica has developed a unique solution for card issuers who need to personalize significant volumes of smart cards without incurring the usually high investments related to such type of equipment or modules.

### APPLICATIONS

EMV CARDS/GIFT PROGRAMS  
PREPAID TELEPHONE CARDS  
MEMBERSHIP & LOYALTY CARDS  
HEALTHCARE/INSURANCE

ID & ACCESS CONTROL CARDS  
LOTTERY CARDS  
ELECTRONIC WALLET  
RESTAURANT TICKETS/PARKING

### TARGET MARKETS

FINANCIAL INSTITUTIONS CARD MANUFACTURERS SERVICE BUREAUS  
TELECOMMUNICATION COMPANIES GOVERNMENTS HOTELS RETAILERS  
TPA'S & INSURANCE COMPANIES RENTAL CAR COMPANIES



## SMART CARD MODULE WITH 5 OR 10 PERSONALIZATION STATIONS

The MC 10 is a newly developed and affordable desktop unit that allows users to simultaneously personalize up to 10 smart cards, thus offering similar productivity levels to that of many smart card modules of larger card issuance systems.

The reduced cycle time allows the MC10 to maintain a high throughput even when performing complex programming operations, such as EMV and multi-application smart cards.

The mechanism works as an "elevator" by which two 5-station smart card modules raise one station at the time until all 10 stations have been loaded, upon which each module descends to its initial position. At this point the first card, now fully personalized, is transferred to the vertical output hopper and replaced by a new card, and the process described above is repeated.

## MAGNETIC STRIPE ENCODING AND READING CAPABILITY

An ISO standard magnetic stripe encoding and reading module (HiCo/LoCo, tracks 1, 2 and 3) makes it possible to perform both smart card and magnetic stripe encoding in a single pass or, more importantly, to feed pre-personalized cards with magnetic stripe into the MC10, which then reads the information encoded, identifies, collects and encodes the "smart card data" onto the chip. This unique feature of the MC10, makes it ideal as a complementary unit to existing card issuance systems.

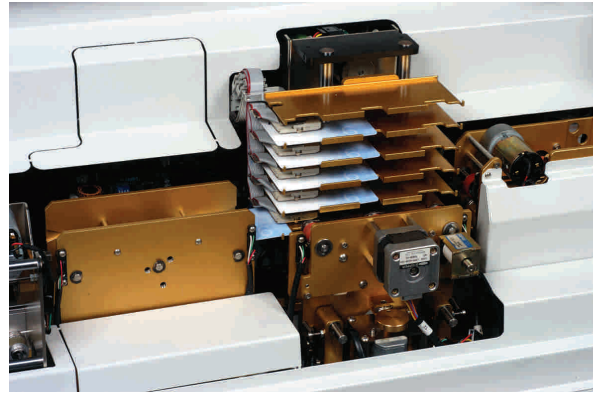
Card issuers can complete all traditional elements of card personalization (magnetic stripe encoding, embossing/indent, thermal printing, topping, etc.) with their existing systems, and then feed these pre-personalized cards into the MC10 to complete the smart card personalization process.

## HIGHER ROI AND FLEXIBILITY

The MC10 offers users similar productivity levels of larger systems, but with much lower investments and, therefore, a higher ROI. In addition, keeping the smart card personalization process separate from other personalization processes, gives increased flexibility and parallel personalization capability and eliminates any downtime resulting from processing non-smart cards using a larger card issuance system with an integrated smart card module. Furthermore, the MC10 can be used as a back-up unit for larger high-volume smart card issuance systems to re-personalize and "recover" cards which have been rejected during the initial personalization process.

## EMV CARD PERSONALIZATION

Matica partners with some of the largest smart card industry solution providers to offer complete EMV card personalization solutions. The MatiCard Windows-based card production software, included with Matica's Professional Card Printers, provides easy user interface between the operator and the MC10.



Internal view of module MC10 with a station smart card module and upgradable transport module

### STANDARD FEATURES

**Card Feed:** automatic

**Magnetic Stripe Encoding and Reading:** HiCo/LoCo (3 tracks)

**Interface:**

- 1 or 2 USB-to-8-RS232 adapter to link the Gemplus reader
- 1 Serial RS232C Port

**Display:** LCD (40 x 2)

**Software:**

- upgradeable Firmware via PC on Flash EPROM
- MatiCard Card Production (Windows 98SE/Me/NT/2K/XP)
- diagnostics and set-up

**Other Features:**

- 5 or 10 Smart card stations
- 5 or 10 Gemplus smart card readers
- output hopper + negative unloader for rejected/defect cards
- key-lock feature
- 3 Function keys

### SPECIFICATIONS

**Card Production Speed:** depends on personalization requirements and data to be encoded on the microchip.

**Input Hopper Capacity:** 250 cards

**Output Hopper Capacity:** 250 cards

**Card Formats Accepted:** CR80

**Card Thickness Accepted:** 30 mil

**Physical Dimensions:**

- height: 15,0"
- width: 32.2"
- depth: 21,6"

**Weight:** 110 lbs.

**Power Supply:**

- 100V, 120V, 220V, 240V - 50/60 Hz

a company of the



[www.matica-usa.com](http://www.matica-usa.com)

#### Headquarters:

MATICA SYSTEM S.R.L.  
Via Guido Rossa 9  
40056 Crespellano (BO) - ITALY  
Tel. +39 051 671 331  
Fax +39 051 671 3303

MATICA USA  
64 Clifton Ave  
Ansonia, CT 06401 - USA  
Ph: 203-734 0117  
Fax: 203-734 0127  
Toll free: 866-4MATICA  
866-4628422  
e-mail: [sales@matica-usa.com](mailto:sales@matica-usa.com)

MATICA SYSTEM BEIJING OFFICE  
5-1-201 West Section  
Shuan Yu Garden  
Hou Sha Yu Town  
Shun Yi District  
1001318 BEIJING  
P.R: CHINA  
Ph: +86 1080488630  
Fax: +86 1080488631